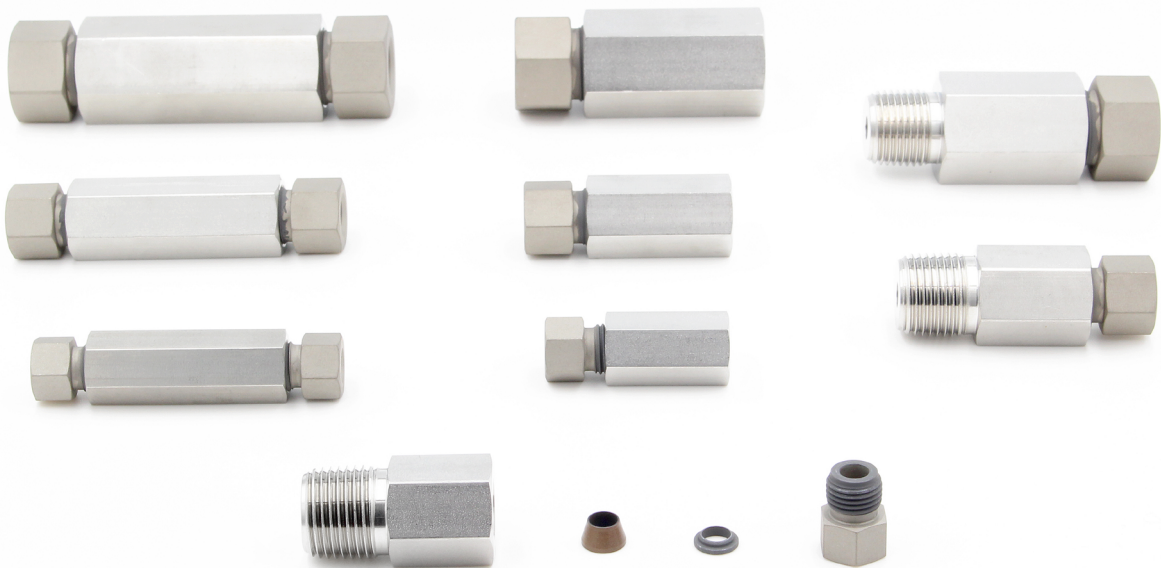


DK-LOK

DKF Series Medium Pressure Tube Fittings


Rev. 01-01
Aug. 2024




Tube to Tube Union

Union
DKFU  5

Union Elbow
DKFL  5

45° Union Elbow
DKFLB  6

Union Tee
DKFT  6

Union Cross
DKFX  7

Bulkhead Union
DKFUB  7

Tube to Male Pipe

Male Connector
DKFMC-N  8

AN Union
DKFUA  8

AN Bulkhead Union
DKFUBA  9

SAE Male O-ring
Connector
DKFMCS-U  9

C&T Type to DKF
Male Adapter
DKFU20MA  10

Tube to Female Pipe

C&T Type to DKF
Female Adapter
DKFU20FA  10

Female Connector
DKFCF-N  11

Bulkhead Female
Connector
DKFCBF-N  11

Tube Stub Connector

C&T Type
Port Connector
DKFCP20CP  12

Port Connector
DKFCP  12

Reducing
Port Connector
DKFCRP  13

Reducer
DKFR  13

Plug, Cap

Plug
DKFP  14

Cap
DKFC  14

Spare Parts

Nut
DKFN  15

Front Ferrule
DKFF  15

Back Ferrule
DKFB  15

DKF Series Medium Pressure Tube Fittings

DKF Series Medium Pressure Tube Fittings are made for applications requiring higher flow rate performance. High tensile strength cold worked Designed for up to 15,000 psi using 316 stainless steel material as standard. We also offer larger ID tubes for maximum flow performance.

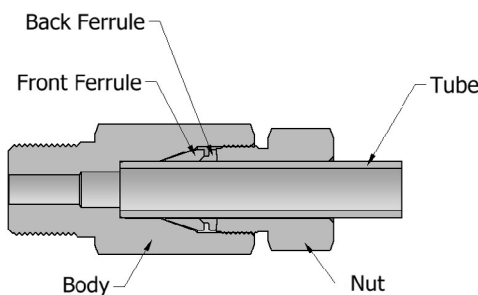
Construction of DKF Series Tube Fittings

DKF Series Medium Pressure Tube Fitting consists of body, front ferrule, back ferrule and nut. The features include.

- Applied to medium pressure gas piping and equipment industry, applied to hydrogen lines (15k)
- Excellent product range up to 3/4 in OD.
- Additional engineering on sealing integrity and swaging action.
- Heat-Code Traceability.
- No torque transferring to connective tubing during installation.
- **1-1/2 turns** past finger tight.

Advanced Features

Every DKF Series Fitting has the features shown below.



1. Front ferrule with corrosion-resistant heat treatment Forms a seal between the tube, body, and ferrule. also Provides mechanical holding force to the tube.
2. Back ferrule with corrosion-resistant heat treatment Provides strong mechanical fixation to the tube.
3. The thread area is longer, improving resistance to pressure and Load into ferrule.
4. Molybdenum disulfide coated inversion nut helps prevent galling, provides easier assembly
5. Long tube support area improves resistance to vibration and Line load.

Table 1. Material Standards

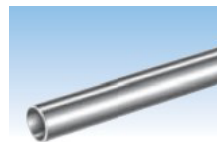
DKF Series Medium Pressure tube fitting are supplied in various materials to satisfy the needs of various applications including on shore oil & gas, refinery, offshore oil & gas, chemical, petrochemical, analytical instrumentation, steel mill, power plant, shipbuilding, pharmaceutical, and alternative fuel.

| Material | Bar stock |
|---------------------|------------|
| Stainless Steel 316 | ASTMA276 |
| | ASTMA479 |
| | ASME SA479 |

DKF Series Port Dimension

Dimensions on DKF Series Port in the catalog are approximate figures and shown in finger-tight position.

Tubing



For safe, reliable and leak-free DKF Series Medium Pressure Tube fitting system, tubing should be considered as one of fitting components.

- DKF Tubing is indicated with "DKF" and is designed to provide optimal performance for DKF fittings. DKF tubing nominal OD.
- As tube size increases, larger wrenches are required for assembly.
- Tubing is bendable. It allows lower pressure drop with fewer connections. This in turn reduces system costs because of less fabricating manpower.
- Piping requires skilled workers for threading.
- (±.003") 316 seamless stainless steel, cold drawn - 1/8 hard (cold drawn) tubing. Tensile strength is approximately 40% higher than Annealing tube.

Tubing Selection

DK-Lok's DKF fittings are engineered and Manufactured to provide consistently high levels of reliability.

Annealed and medium pressure cold drawn high quality tubing 1/8 hard material. Using a tube other than the intended tube may result in product leakage and tube dislodgement.

DK-Lok's DKF fittings are designed to operate over a wide range. Various "medium pressure" applications available up to 15,000 psi.

Tubing Handling

Careful handling and storage practices will protect tubing from unnecessary scratches, nicks, or degrading the good tubing surface.

- Tubing ends should be capped so any foreign materials will not fall inside during transportation and storage.
- Do not drag across tubing rack, cement, gravel or any rough surface.
- Do use correct tube cutter for tube material. The wrong cutter may result in excessive deformation of the tube end.
- Do not cut deep with each turn of cutting.
- Tube cutters and hacksaws should be sharp enough.
- Hacksaw blades should have at least 32 teeth per inch.
- Do deburr tube ends before inserting in fittings.

Table 2. Stainless Steel Tubing

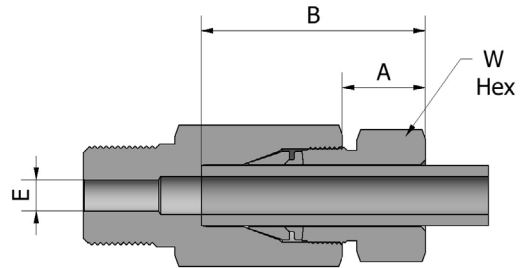
Allowable operating pressures are specified at an S value of 35,000 psi (241 MPa) at -20 to 100°F (-28 to 37°C) for ASME B31.3, If using tubing at temperatures above 37°C (100°F), see Temperature Rise Factor. Coned or threaded tubing is 1/8-hard 316 seamless stainless steel tubing with a nominal outside diameter to aid in coning and threading operations when the tubing is used with fittings.

| Tube OD in. | Normal OD in. (mm) | Normal Wall Thickness in. (mm) | Pressure Rating ASME B31.3 |
|----------------|-----------------------|--------------------------------------|-------------------------------|
| | | | Psig (bar) |
| 1/4" | 0.250 (6.35) | 0.065 (1.65) | 15,000 (1,034) |
| 3/8" | 0.375 (9.53) | 0.083 (2.11) | 15,000 (1,034) |
| 1/2" | 0.500 (12.70) | 0.109 (2.77) | 15,000 (1,034) |
| 9/16" | 0.562 (14.28) | 0.124 (3.15) | 15,000 (1,034) |
| 3/4" | 0.750 (19.05) | 0.165 (4.19) | 15,000 (1,034) |

Recommended ordering information is cold drawn 1/8 hard high quality 316 stainless steel tubing. OD tolerance is ± 0.005 inches/ ± 0.127 mm and wall thickness tolerance is $\pm 10\%$. Minimum tensile strength of 105,000 psi (723.5 MPa) and minimum yield strength of 75,000 psi (516.8 MPa), minimum elongation of 20%, and hardness not to exceed 30 HRC. Suitable for bending and flaring with no scratches or damage to the tube.

Table 3. Tube End Dimensional Data

Dimension A and B are for hand tightened position. Dimensions in inches are for reference only. However, this may change.



| Inches | | | | | | |
|--------|----------|-----------------|------|------|------|-------|
| Size | Tube O.D | Stright Threads | A | B | E | W Hex |
| 4 | 1/4 | 1/2 - 20 | 0.51 | 1.36 | 3.3 | 9/16 |
| 6 | 3/8 | 5/8 - 20 | 0.62 | 1.58 | 6.35 | 11/16 |
| 8 | 1/2 | 13/16 - 20 | 0.68 | 1.84 | 7.9 | 15/16 |
| 9 | 9/16 | 7/8 - 20 | 0.75 | 1.92 | 9.65 | 1 |
| 12 | 3/4 | 1-1/8 - 18 | 0.89 | 2.27 | 13.2 | 1-1/4 |

Material

Using like tubing and fitting material is essential for leak-free sealing system. Unlike material may have different mechanical properties that may adversely affect the fitting seal on tubing.

Application



The application includes where thermal shock, extreme impulse such as power generation, equipment, where leak-tight service must be in place such as hazardous gas and offshore industries.

Ordering Information

Suffix the material designator to the part number

Example: DKFU-8-S

→ DKF(Model Name) + U(Union)
+ 8(1/2" Tube) + S(Stainless steel)

Material Designator

| Material | Designator |
|--------------------|------------|
| Stainless Steel316 | S |

Dedication to Quality

Our resources and vast product line are available through our worldwide distribution network. For more information regarding our products and services, please contact your authorized DK-Lok Instrumentation Distributor.

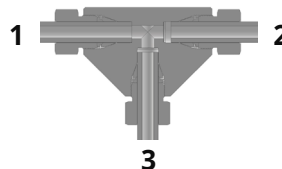
Table 4. Temperature Derating Factors

| Temperature | | Derating Factors Cold-Drawn 1/8 Hard 316 SS Tubing |
|-------------|-----|--|
| °F | °C | |
| 150 | 66 | 1 |
| 200 | 93 | 1 |
| 250 | 121 | 0.98 |
| 300 | 149 | 0.97 |
| 400 | 204 | 0.96 |
| 500 | 260 | 0.96 |
| 600 | 316 | 0.96 |
| 700 | 371 | 0.93 |
| 800 | 427 | 0.92 |
| 900 | 482 | 0.88 |
| 1000 | 538 | 0.84 |

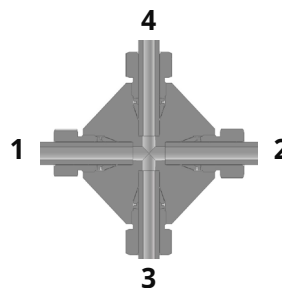
Elevated temperature factor = suggested allowable working pressure at elevated temperature / suggested allowable working pressure at room temperature.

EX) The elevated temperature factor for 700°F (371°C) is 0.93: 15,000 psig (1034 bar) × 0.93 = 13,950 psig (962 bar)

Table 5. Tee and Cross Fitting

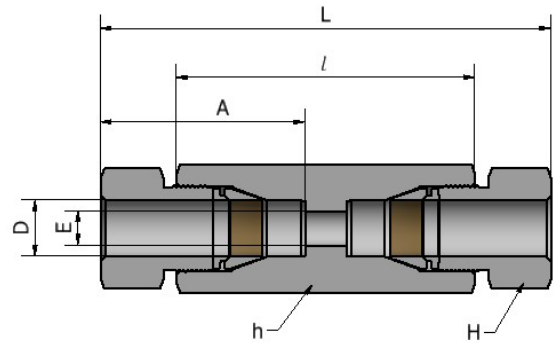
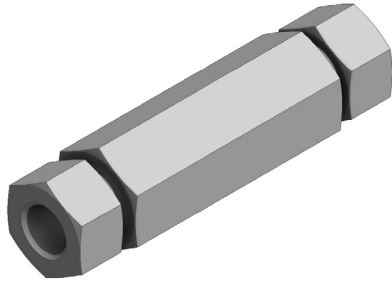


Tee Fitting part number is Described by first the run (1 and 2) and next the Branch (3).



Cross fitting part number is Described by first the run (1 and 2) and next the Branch (3 and 4)

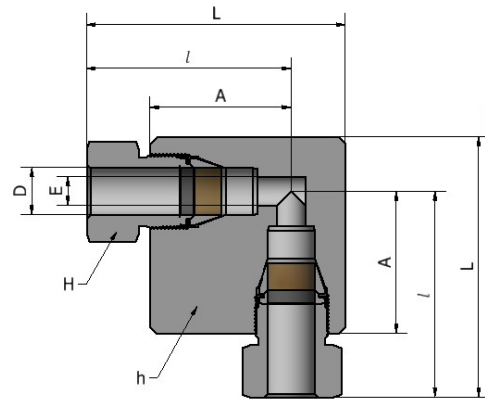
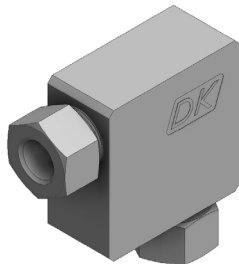
Union
DKFU



Fractional

| Part No. | Tube O.D. D | | E Min. | Width across flat | | | | l | L |
|----------|----------------|-------|-----------|-------------------|-------|--------|-------|-------|--------|
| | In. | mm | | H | | h | | | |
| | | | | In. | mm | In. | mm | | |
| DKFU-4 | 1/4 | 6.35 | 3.3 | 9/16 | 14.28 | 5/8 | 15.87 | 47.8 | 73.78 |
| DKFU-6 | 3/8 | 9.53 | 6.35 | 11/16 | 17.46 | 3/4 | 19.05 | 55.6 | 87.2 |
| DKFU-8 | 1/2 | 12.7 | 7.9 | 15/16 | 23.81 | 1 | 25.4 | 68.45 | 103.15 |
| DKFU-9 | 9/16 | 14.29 | 9.65 | 1 | 25.4 | 1-1/16 | 26.98 | 68.5 | 106.65 |
| DKFU-12 | 3/4 | 19.05 | 13.2 | 1-1/4 | 31.75 | 1-3/8 | 34.92 | 84.2 | 129.29 |

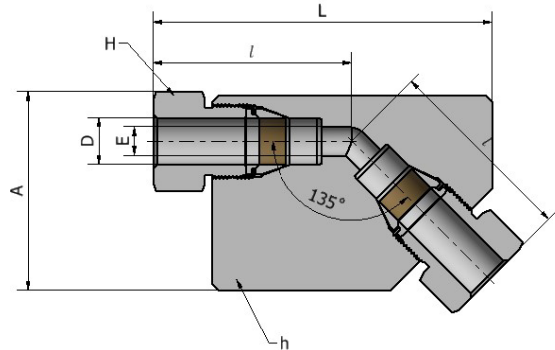
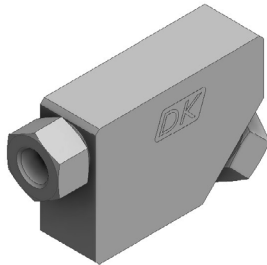
Union Elbow
DKFL



Fractional

| Part No. | Tube O.D. D | | E Min. | Width across flat | | | | A | l | L |
|----------|----------------|-------|-----------|-------------------|-------|--------|-------|-------|-------|-------|
| | In. | mm | | H | | h(Th.) | | | | |
| | | | | In. | mm | In. | mm | | | |
| DKFL-4 | 1/4 | 6.35 | 3.3 | 9/16 | 14.28 | 5/8 | 15.87 | 26.16 | 38.86 | 47.75 |
| DKFL-6 | 3/8 | 9.53 | 6.35 | 11/16 | 17.46 | 3/4 | 19.05 | 31.5 | 47.24 | 57.15 |
| DKFL-8 | 1/2 | 12.7 | 7.9 | 15/16 | 23.81 | 1 | 25.4 | 39.12 | 56.4 | 71.37 |
| DKFL-9 | 9/16 | 14.29 | 9.65 | 1 | 25.4 | 1-1/16 | 26.98 | 39.12 | 58.2 | 73.15 |
| DKFL-12 | 3/4 | 19.05 | 13.2 | 1-1/4 | 31.75 | 1-3/8 | 34.92 | 49.3 | 71.63 | 89.15 |

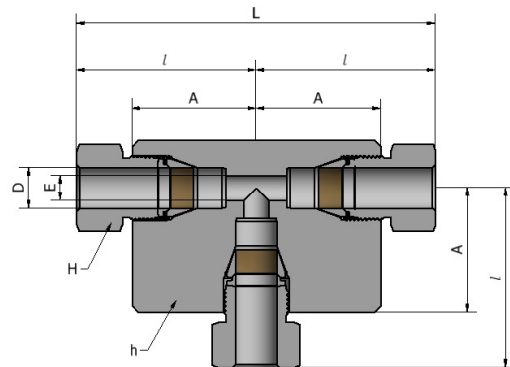
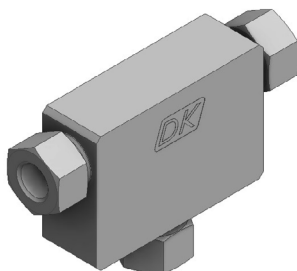
45° Union Elbow DKFLB



Fractional

| Part No. | Tube O.D. D | | E Min. | Width across flat | | | | A | l | L |
|----------|----------------|-------|-----------|-------------------|-------|--------|-------|-------|-------|-------|
| | In. | mm | | H | | h | | | | |
| | | | | In. | mm | In. | mm | | | |
| DKFLB-4 | 1/4 | 6.35 | 3.3 | 9/16 | 14.28 | 5/8 | 15.87 | 35.05 | 38.1 | 65.02 |
| DKFLB-6 | 3/8 | 9.53 | 6.35 | 11/16 | 17.46 | 3/4 | 19.05 | 41.4 | 45.97 | 78.74 |
| DKFLB-8 | 1/2 | 12.7 | 7.9 | 15/16 | 23.81 | 1 | 25.4 | 54.1 | 55.37 | 95.5 |
| DKFLB-9 | 9/16 | 14.29 | 9.65 | 1 | 25.4 | 1-1/16 | 26.98 | 54.1 | 56.9 | 97.03 |
| DKFLB-12 | 3/4 | 19.05 | 13.2 | 1-1/4 | 31.75 | 1-3/8 | 34.92 | 66.8 | 71.63 | 120.9 |

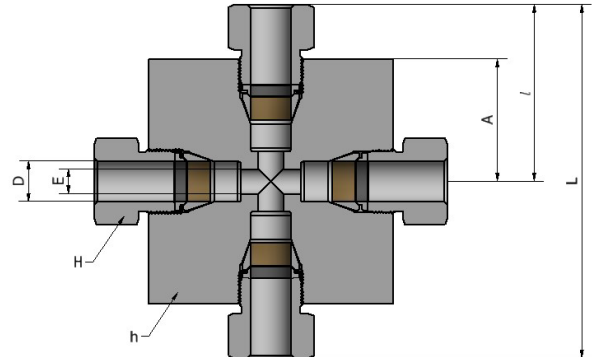
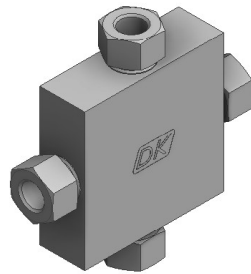
Union Tee DKFT



Fractional

| Part No. | Tube O.D. D | | E Min. | Width across flat | | | | A | l | L |
|----------|----------------|-------|-----------|-------------------|-------|--------|-------|-------|-------|--------|
| | In. | mm | | H | | h | | | | |
| | | | | In. | mm | In. | mm | | | |
| DKFT-4 | 1/4 | 6.35 | 3.3 | 9/16 | 14.28 | 5/8 | 15.87 | 26.16 | 38.86 | 77.72 |
| DKFT-6 | 3/8 | 9.53 | 6.35 | 11/16 | 17.46 | 3/4 | 19.05 | 31.5 | 47.24 | 94.49 |
| DKFT-8 | 1/2 | 12.7 | 7.9 | 15/16 | 23.81 | 1 | 25.4 | 39.12 | 56.39 | 113.03 |
| DKFT-9 | 9/16 | 14.29 | 9.65 | 1 | 25.4 | 1-1/16 | 26.98 | 39.12 | 58.17 | 116.08 |
| DKFT-12 | 3/4 | 19.05 | 13.2 | 1-1/4 | 31.75 | 1-3/8 | 34.92 | 49.3 | 71.63 | 143.26 |

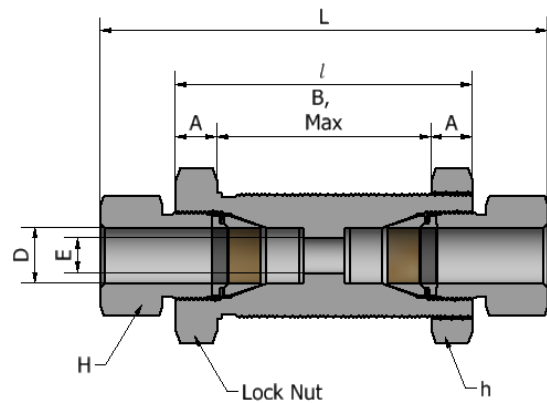
Union Cross
DKFX



Fractional

| Part No. | Tube O.D D | | E Min. | Width across flat | | | | A | l | L |
|----------|---------------|-------|-----------|-------------------|-------|--------|-------|-------|-------|--------|
| | In. | mm | | H | | h | | | | |
| | | | | In. | mm | In. | mm | | | |
| DKFT-4 | 1/4 | 6.35 | 3.3 | 9/16 | 14.28 | 5/8 | 15.87 | 26.16 | 38.86 | 77.72 |
| DKFT-6 | 3/8 | 9.53 | 6.35 | 11/16 | 17.46 | 3/4 | 19.05 | 31.5 | 47.24 | 94.49 |
| DKFT-8 | 1/2 | 12.7 | 7.9 | 15/16 | 23.81 | 1 | 25.4 | 39.12 | 56.39 | 113.03 |
| DKFT-9 | 9/16 | 14.29 | 9.65 | 1 | 25.4 | 1-1/16 | 26.98 | 39.12 | 58.17 | 116.08 |
| DKFT-12 | 3/4 | 19.05 | 13.2 | 1-1/4 | 31.75 | 1-3/8 | 34.92 | 49.3 | 71.63 | 143.26 |

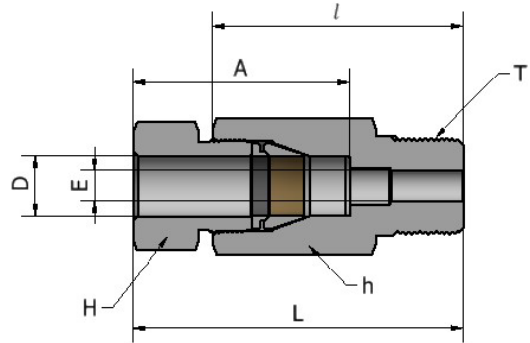
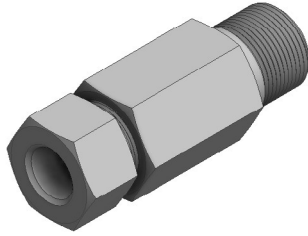
Bulkhead Union Connector
DKFUB



Fractional

| Part No. | Tube O.D D | | E Min. | Width across flat | | | | R, Thread | A | B | l | L |
|----------|---------------|-------|-----------|-------------------|-------|-------|-------|-----------|-------|-------|-------|--------|
| | In. | mm | | H | | h | | | | | | |
| | | | | In. | mm | In. | mm | | | | | |
| DKFUB-4 | 1/4 | 6.35 | 3.3 | 9/16 | 14.28 | 1 | 25.4 | 3/4-20 | 12.7 | 22.35 | 47.75 | 73.15 |
| DKFUB-6 | 3/8 | 9.53 | 6.35 | 11/16 | 17.46 | 1-1/8 | 28.57 | 7/8-20 | 14.22 | 27.18 | 55.63 | 87.38 |
| DKFUB-8 | 1/2 | 12.7 | 7.9 | 15/16 | 23.81 | 1-3/8 | 34.92 | 1-1/8-20 | 17.53 | 33.53 | 68.58 | 103.38 |
| DKFUB-9 | 9/16 | 14.29 | 9.65 | 1 | 25.4 | 1-3/8 | 34.92 | 1-1/8-20 | 17.53 | 33.53 | 68.58 | 106.68 |
| DKFUB-12 | 3/4 | 19.05 | 13.2 | 1-1/4 | 31.75 | 1-7/8 | 47.62 | 1-7/16-18 | 22.35 | 39.62 | 84.07 | 129.03 |

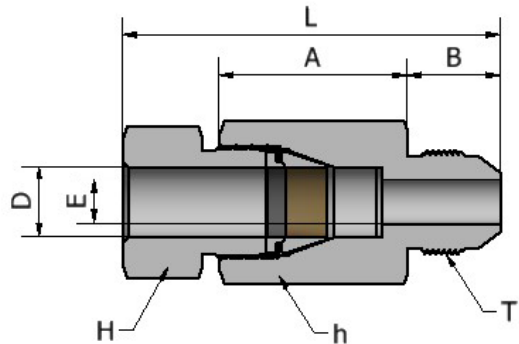
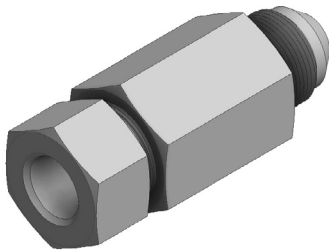
Male Connector DKFMC-N



Fractional

| Part No. | Tube O.D D | | T NPT | E Min. | Width across flat | | | | l | L |
|------------|---------------|-------|----------|-----------|-------------------|-------|--------|-------|------|-------|
| | In. | mm | | | H | | h | | | |
| | | | | | In. | mm | In. | mm | | |
| DKFMC4-8N | 1/4 | 6.35 | 1/2 | 3.3 | 9/16 | 14.28 | 7/8 | 22.22 | 42.4 | 55.41 |
| DKFMC6-8N | 3/8 | 9.53 | 1/2 | 6.35 | 11/16 | 17.46 | 7/8 | 22.22 | 47.2 | 63 |
| DKFMC8-8N | 1/2 | 12.7 | 1/2 | 7.9 | 15/16 | 23.81 | 1 | 25.4 | 54.1 | 71.45 |
| DKFMC9-8N | 9/16 | 14.29 | 1/2 | 9.65 | 1 | 25.4 | 1-1/16 | 26.98 | 58.2 | 77.28 |
| DKFMC12-8N | 3/4 | 19.05 | 1/2 | 13.2 | 1-1/4 | 31.75 | 1-3/8 | 34.92 | 75.4 | 97.94 |

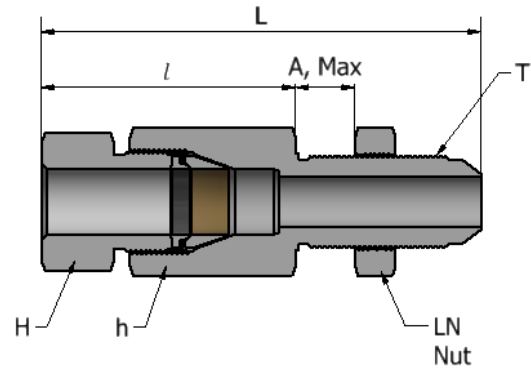
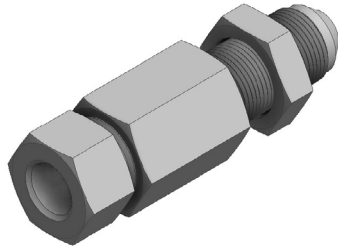
AN Union DKFUA



Fractional

| Part No. | Tube O.D D | | AN Flare Adapter | Straight Thread T(U) | E Min. | Width across flat | | | | B | A | L |
|----------|---------------|------|---------------------|----------------------------|-----------|-------------------|-------|-----|-------|-------|-------|-------|
| | In. | mm | | | | H | | h | | | | |
| | | | | | | In. | mm | In. | mm | | | |
| DKFUA4-4 | 1/4 | 6.35 | 1/4 | 7/16-20 | 3.3 | 9/16 | 14.28 | 5/8 | 15.87 | 13.97 | 26.16 | 52.83 |
| DKFUA4-6 | 3/8 | 9.53 | 1/4 | 7/16-20 | 6.35 | 11/16 | 17.46 | 3/4 | 19.05 | 13.97 | 34.8 | 64.52 |
| DKFUA4-8 | 1/2 | 12.7 | 1/4 | 7/16-20 | 7.9 | 15/16 | 23.81 | 1 | 25.4 | 13.97 | 42.16 | 73.66 |
| DKFUA6-4 | 1/4 | 6.35 | 3/8 | 9/16-18 | 3.3 | 9/16 | 14.28 | 5/8 | 15.87 | 14.22 | 23.37 | 50.04 |
| DKFUA6-6 | 3/8 | 9.53 | 3/8 | 9/16-18 | 6.35 | 11/16 | 17.46 | 3/4 | 19.05 | 14.22 | 26.92 | 56.9 |
| DKFUA6-8 | 1/2 | 12.7 | 3/8 | 9/16-18 | 7.9 | 15/16 | 23.81 | 1 | 25.4 | 14.22 | 42.16 | 73.66 |
| DKFUA8-6 | 3/8 | 9.53 | 1/2 | 3/4-16 | 6.35 | 11/16 | 17.46 | 3/4 | 19.05 | 16.76 | 26.92 | 59.44 |
| DKFUA8-8 | 1/2 | 12.7 | 1/2 | 3/4-16 | 7.9 | 15/16 | 23.81 | 1 | 25.4 | 16.76 | 34.04 | 68.33 |

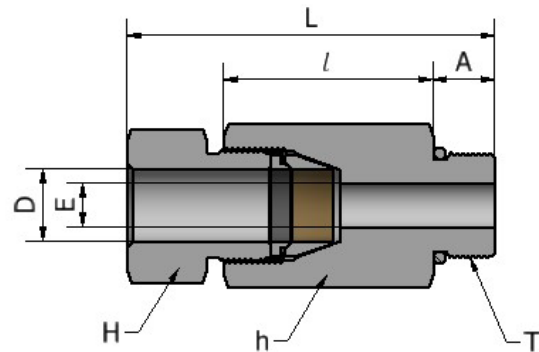
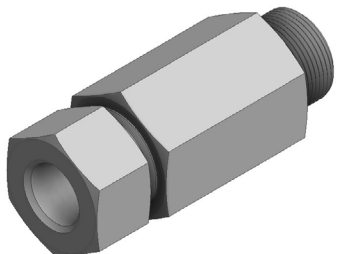
AN Bulkhead Union
DKFUBA



Fractional

| Part No. | Tube O.D D | | AN Flare Adapter | Straight Thread T(U) | E Min. | Width across flat | | | | LN Hex | A, Max | l | L |
|-----------|---------------|-------|---------------------|----------------------------|-----------|-------------------|-------|--------|-------|-----------|-----------|-------|-------|
| | In. | mm | | | | H | | h | | | | | |
| | | | | | | In. | mm | In. | mm | | | | |
| DKFUBA4-4 | 1/4 | 6.35 | 1/4 | 7/16-20 | 3.3 | 9/16 | 14.28 | 5/8 | 15.87 | 11/16 | 10.16 | 38.86 | 70.1 |
| DKFUBA6-6 | 3/8 | 9.53 | 3/8 | 9/16-18 | 6.35 | 11/16 | 17.46 | 3/4 | 19.05 | 13/16 | 12.19 | 49.02 | 82.3 |
| DKFUBA8-8 | 1/2 | 12.7 | 1/2 | 3/4-16 | 7.9 | 15/16 | 23.81 | 1 | 25.4 | 1 | 12.7 | 50.04 | 87.38 |
| DKFUBA9-8 | 9/16 | 14.29 | 1/2 | 3/4-16 | 9.65 | 1 | 25.4 | 1-1/16 | 26.98 | 1 | 12.7 | 58.17 | 95.5 |

SAE Male O-ring Connector
DKFMCS-U

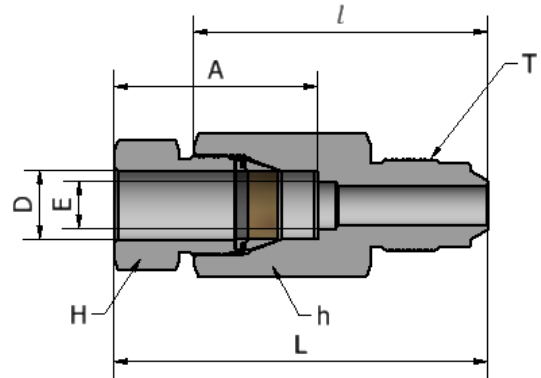
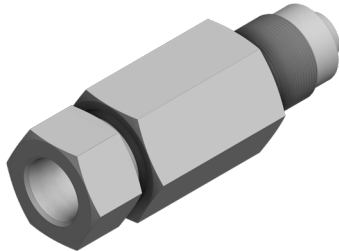


Fractional

| Part No. | Tube O.D D | | Straight Thread T(U) | E Min. | Width across flat | | | | A | l | L |
|------------|---------------|-------|----------------------------|-----------|-------------------|-------|--------|-------|-------|-------|-------|
| | In. | mm | | | H | | h | | | | |
| | | | | | In. | mm | In. | mm | | | |
| DKFMCS4-4U | 1/4 | 6.35 | 7/16-20 | 3.3 | 9/16 | 14.28 | 5/8 | 15.87 | 10.92 | 24.64 | 48.26 |
| DKFMCS4-6U | 1/4 | 6.35 | 9/16-18 | 3.3 | 9/16 | 14.28 | 11/16 | 17.46 | 11.94 | 24.64 | 49.28 |
| DKFMCS4-8U | 1/4 | 6.35 | 3/4-16 | 3.3 | 9/16 | 14.28 | 7/8 | 22.22 | 13.97 | 23.11 | 50.04 |
| DKFMCS6-4U | 3/8 | 9.53 | 7/16-20 | 6.35 | 11/16 | 17.46 | 3/4 | 19.05 | 10.92 | 34.29 | 61.21 |
| DKFMCS6-6U | 3/8 | 9.53 | 9/16-18 | 6.35 | 11/16 | 17.46 | 3/4 | 19.05 | 11.94 | 27.94 | 55.88 |
| DKFMCS6-8U | 3/8 | 9.53 | 3/4-16 | 6.35 | 11/16 | 17.46 | 7/8 | 22.22 | 13.97 | 26.67 | 56.64 |
| DKFMCS8-4U | 1/2 | 12.7 | 7/16-20 | 6.35 | 15/16 | 23.81 | 1 | 25.4 | 10.92 | 42.93 | 71.37 |
| DKFMCS8-6U | 1/2 | 12.7 | 9/16-18 | 7.9 | 15/16 | 23.81 | 1 | 25.4 | 11.94 | 42.16 | 71.63 |
| DKFMCS8-8U | 1/2 | 12.7 | 3/4-16 | 7.9 | 15/16 | 23.81 | 1 | 25.4 | 13.97 | 34.54 | 66.04 |
| DKFMCS9-6U | 9/16 | 14.29 | 9/16-18 | 9.65 | 1 | 25.4 | 1-1/16 | 31.75 | 11.94 | 42.42 | 73.41 |
| DKFMCS9-8U | 9/16 | 14.29 | 3/4-16 | 9.65 | 1 | 25.4 | 1-1/16 | 31.75 | 13.97 | 40.39 | 73.41 |

C&T Type to DKF Male Adapter

DKFU20MA

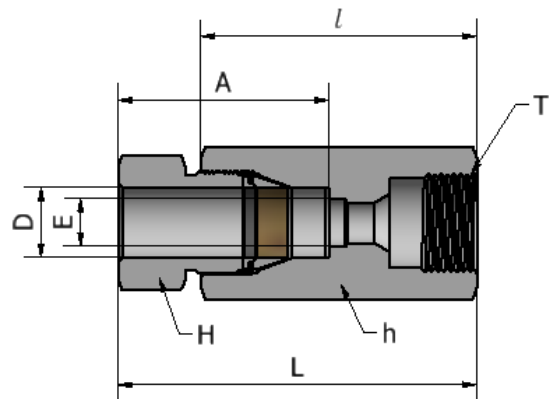
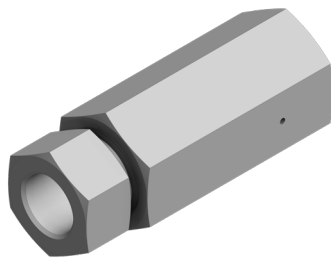


Fractional

| Part No. | Tube O.D D | | Straight Thread T | E Min. | Width across flat | | | | A | l | L |
|---------------|---------------|-------|-------------------------|-----------|-------------------|-------|--------|-------|-------|-------|-------|
| | In. | mm | | | H | | h | | | | |
| | | | | | In. | mm | In. | mm | | | |
| DKFU20MA4-4 | 1/4 | 6.35 | 7/16-20 | 3.3 | 9/16 | 14.28 | 5/8 | 15.87 | 34.51 | 46.74 | 59.75 |
| DKFU20MA6-6 | 3/8 | 9.53 | 9/16-18 | 6.35 | 11/16 | 17.46 | 3/4 | 19.05 | 40.1 | 58.67 | 74.47 |
| DKFU20MA9-9 | 9/16" | 14.29 | 13/16-16 | 9.65 | 1 | 25.4 | 1-1/16 | 26.98 | 48.58 | 67.82 | 86.9 |
| DKFU20MA12-12 | 3/4" | 19.05 | NPSM3/4-14 | 13.2 | 1-1/4 | 31.75 | 1-3/8 | 34.92 | 57.53 | 83 | 105.5 |

C&T Type to DKF Female Adapter

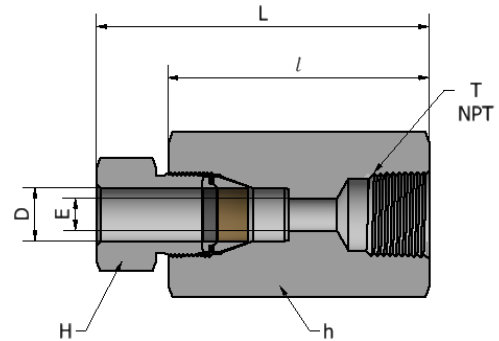
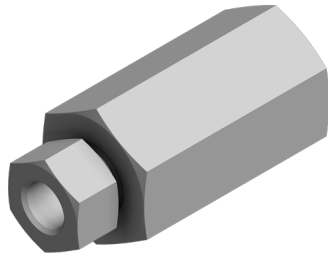
DKFU20FA



Fractional

| Part No. | Tube O.D D | | Straight Thread T | E Min. | Width across flat | | | | A | l | L |
|---------------|---------------|-------|-------------------------|-----------|-------------------|-------|-------|-------|-------|-------|-------|
| | in. | mm | | | H | | h | | | | |
| | | | | | In. | mm | In. | mm | | | |
| DKFU20FA4-4 | 1/4 | 6.35 | 7/16-20 | 3.3 | 9/16 | 14.28 | 11/16 | 17.46 | 34.51 | 44.65 | 57.66 |
| DKFU20FA6-6 | 3/8 | 9.53 | 9/16-18 | 6.35 | 11/16 | 17.46 | 7/8 | 22.22 | 40.1 | 50.05 | 65.85 |
| DKFU20FA9-9 | 9/16" | 14.29 | 13/16-16 | 9.65 | 1 | 25.4 | 1-1/8 | 28.58 | 48.58 | 61.25 | 80.33 |
| DKFU20FA12-12 | 3/4" | 19.05 | NPSM3/4-14 | 13.2 | 1-1/4 | 31.75 | - | 36 | 57.53 | 75.4 | 98 |

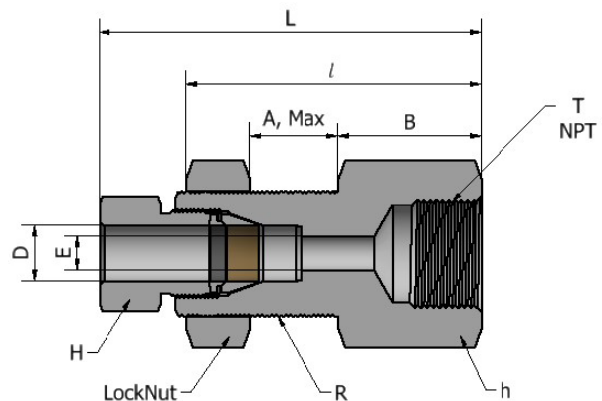
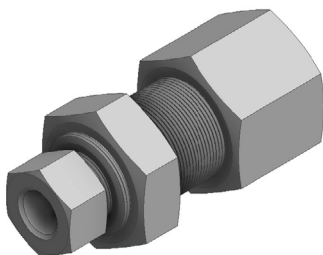
Female Connector
DKFCF-N



Fractional

| Part No. | Tube O.D D | | T NPT | E Min. | Width across flat | | | | l | L |
|------------|---------------|-------|----------|-----------|-------------------|-------|-------|-------|-------|-------|
| | In. | mm | | | H | | h | | | |
| | | | | | In. | mm | In. | mm | | |
| DKFCF4-2N | 1/4 | 6.35 | 1/8-27 | 3.3 | 9/16 | 14.28 | 13/16 | 20.64 | 39.62 | 52.32 |
| DKFCF4-4N | 1/4 | 6.35 | 1/4-18 | 3.3 | 9/16 | 14.28 | 1 | 25.4 | 44.45 | 57.15 |
| DKFCF4-6N | 1/4 | 6.35 | 3/8-18 | 3.3 | 9/16 | 14.28 | 1-1/8 | 28.57 | 46.99 | 59.69 |
| DKFCF4-8N | 1/4 | 6.35 | 1/2-14 | 3.3 | 9/16 | 14.28 | 1-3/8 | 34.92 | 52.83 | 65.53 |
| DKFCF6-2N | 3/8 | 9.53 | 1/8-27 | 6.35 | 11/16 | 17.46 | 13/16 | 20.64 | 44.2 | 60.2 |
| DKFCF6-4N | 3/8 | 9.53 | 1/4-18 | 6.35 | 11/16 | 17.46 | 1 | 25.4 | 49.02 | 65.02 |
| DKFCF6-6N | 3/8 | 9.53 | 3/8-18 | 6.35 | 11/16 | 17.46 | 1-1/8 | 28.57 | 51.56 | 67.56 |
| DKFCF6-8N | 3/8 | 9.53 | 1/2-14 | 6.35 | 11/16 | 17.46 | 1-3/8 | 34.92 | 56.9 | 72.9 |
| DKFCF8-4N | 1/2 | 12.7 | 1/4-18 | 7.9 | 15/16 | 23.81 | 1 | 25.4 | 55.88 | 73.41 |
| DKFCF8-6N | 1/2 | 12.7 | 3/8-18 | 7.9 | 15/16 | 23.81 | 1-1/8 | 28.57 | 58.42 | 75.95 |
| DKFCF8-8N | 1/2 | 12.7 | 1/2-14 | 7.9 | 15/16 | 23.81 | 1-3/8 | 34.92 | 63.75 | 81.28 |
| DKFCF9-4N | 9/16 | 14.29 | 1/4-18 | 9.65 | 1 | 25.4 | 1-3/8 | 34.92 | 55.37 | 68.07 |
| DKFCF9-6N | 9/16 | 14.29 | 3/8-18 | 9.65 | 1 | 25.4 | 1-1/8 | 28.57 | 58.42 | 74.42 |
| DKFCF9-8N | 9/16 | 14.29 | 1/2-14 | 9.65 | 1 | 25.4 | 1-3/8 | 34.92 | 63.75 | 82.8 |
| DKFCF12-8N | 3/4 | 19.05 | 1/2-14 | 13.2 | 1-1/4 | 31.75 | 1-3/8 | 34.92 | 71.63 | 93.98 |

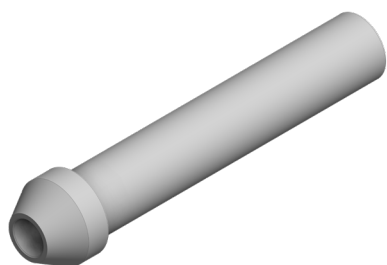
Bulkhead Female Connector
DKFCBF-N



Fractional

| Part No. | Tube O.D D | | T NPT | E Min. | Width across flat | | | | R | A, Max | B | l | L |
|-------------|---------------|-------|----------|-----------|-------------------|-------|-------|-------|----------|-----------|-------|-------|-------|
| | In. | mm | | | H | | h | | | | | | |
| | | | | | In. | mm | In. | mm | | | | | |
| DKFCBF4-4N | 1/4 | 6.35 | 1/4-18 | 3.3 | 9/16 | 14.28 | 1 | 25.4 | 3/4-20 | 16 | 19.05 | 47.75 | 60.45 |
| DKFCBF6-8N | 3/8 | 9.53 | 1/2-14 | 6.35 | 11/16 | 17.46 | 1-3/8 | 34.92 | 7/8-20 | 17.53 | 31.75 | 63.5 | 79.5 |
| DKFCBF6-12N | 3/8 | 9.53 | 3/4-14 | 6.35 | 11/16 | 17.46 | 1-1/2 | 38.1 | 7/8-20 | 17.53 | 33.27 | 65.02 | 81.03 |
| DKFCBF8-12N | 1/2 | 12.7 | 3/4-14 | 7.9 | 15/16 | 23.81 | 1-1/2 | 38.1 | 1-1/8-20 | 20.57 | 33.27 | 71.37 | 88.9 |
| DKFCBF9-4N | 9/16 | 14.29 | 1/4-18 | 9.65 | 1 | 25.4 | 1-3/8 | 34.92 | 1-1/8-20 | 17.78 | 17.53 | 52.58 | 71.63 |

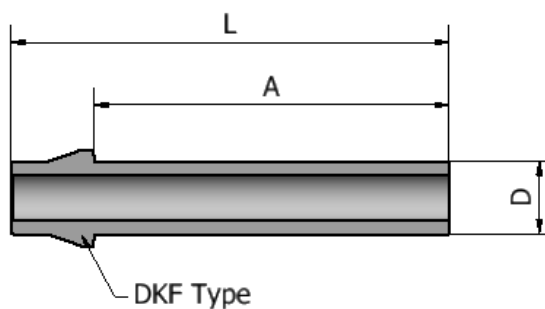
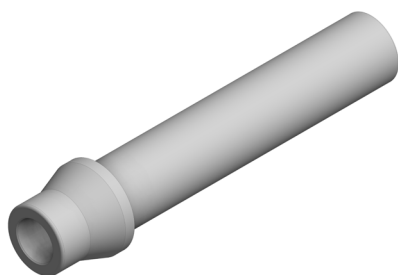
C&T Type Port Connector DKFCP20CP



Fractional

| Part No. | Cone & Thread Type D1 | Tube O.D D2 | | A | L |
|----------------|--------------------------|----------------|-------|------|-------|
| | | In. | mm | | |
| DKFCP20CP9-9 | 9/16 | 9/16 | 14.29 | 77 | 89.7 |
| DKFCP20CP12-12 | 3/4 | 3/4 | 19.05 | 87.5 | 103.4 |

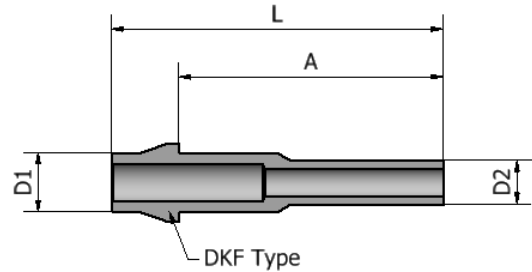
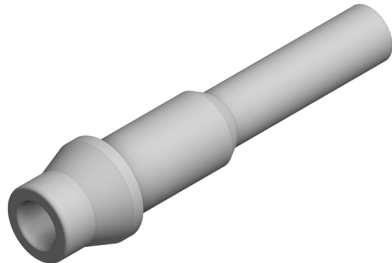
Port Connector DKFCP



Fractional

| Part No. | Tube O.D D | | DKF Type | A | L |
|----------|---------------|-------|----------|------|-------|
| | In. | mm | | | |
| DKFCP-4 | 1/4 | 6.35 | 1/4 | 56.6 | 68.3 |
| DKFCP-6 | 3/8 | 9.53 | 3/8 | 67.1 | 80.5 |
| DKFCP-8 | 1/2 | 12.7 | 1/2 | 74.9 | 94 |
| DKFCP-9 | 9/16 | 14.29 | 9/16 | 78 | 97 |
| DKFCP-12 | 3/4 | 19.05 | 3/4 | 93.4 | 114.8 |

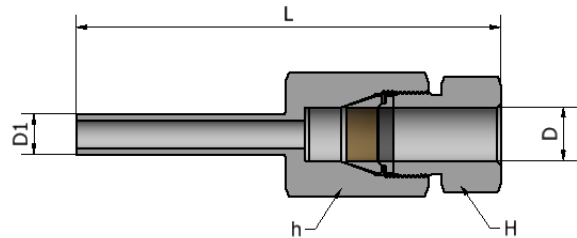
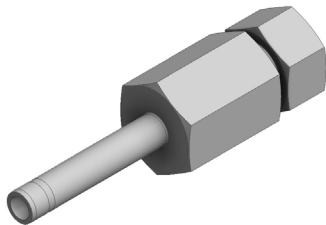
Reducing Port Connector
DKFCRP



Fractional

| Part No. | Tube O.D D1 | | Tube O.D D2 | | DKF Type | A | L |
|------------|----------------|-------|----------------|-------|----------|------|------|
| | In. | mm | In. | mm | | | |
| DKFCRP6-4 | 3/8 | 9.53 | 1/4 | 6.35 | 3/8 | 61 | 74.4 |
| DKFCRP8-6 | 1/2 | 12.7 | 3/8 | 9.53 | 1/2 | 68.1 | 87.1 |
| DKFCRP9-6 | 9/16 | 14.29 | 3/8 | 9.53 | 9/16 | 69.9 | 88.9 |
| DKFCRP12-9 | 3/4 | 19.05 | 9/16 | 14.29 | 3/4 | 84.6 | 106 |

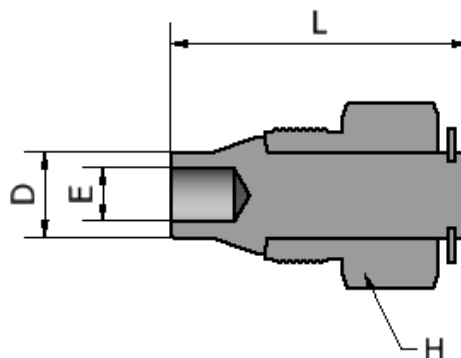
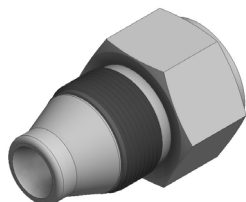
Reducer
DKFR



Fractional

| Part No. | D1 | Tube O.D D | | Width across flat | | | | L |
|----------|------|---------------|-------|-------------------|-------|--------|-------|--------|
| | | | | H | | h | | |
| | | | | In. | mm | In. | mm | |
| DKFR4-6 | 3/8 | 1/4 | 6.35 | 11/16 | 17.46 | 3/4 | 19.05 | 88.65 |
| DKFR4-8 | 1/2 | 1/4 | 6.35 | 15/16 | 23.81 | 1 | 25.4 | 100.08 |
| DKFR4-9 | 9/16 | 1/4 | 6.35 | 1 | 25.4 | 1-1/16 | 26.98 | 101.6 |
| DKFR6-4 | 1/4 | 3/8 | 9.53 | 9/16 | 14.28 | 5/8 | 15.87 | 83.82 |
| DKFR6-8 | 1/2 | 3/8 | 9.53 | 11/16 | 17.46 | 1 | 25.4 | 105.92 |
| DKFR6-9 | 9/16 | 3/8 | 9.53 | 1 | 25.4 | 1-1/16 | 26.98 | 107.7 |
| DKFR8-4 | 1/4 | 1/2 | 12.7 | 9/16 | 14.28 | 5/8 | 15.87 | 90.42 |
| DKFR8-6 | 3/8 | 1/2 | 12.7 | 11/16 | 17.46 | 3/4 | 19.05 | 101.35 |
| DKFR9-4 | 1/4 | 9/16 | 14.29 | 9/16 | 14.28 | 5/8 | 15.87 | 92.2 |
| DKFR9-6 | 3/8 | 9/16 | 14.29 | 11/16 | 17.46 | 3/4 | 19.05 | 103.12 |
| DKFR9-12 | 3/4 | 9/16 | 14.29 | 1-1/4 | 31.75 | 1-3/8 | 34.92 | 126.24 |
| DKFR12-4 | 1/4 | 3/4 | 19.05 | 9/16 | 14.28 | 13/16 | 20.64 | 105.92 |
| DKFR12-6 | 3/8 | 3/4 | 19.05 | 11/16 | 17.46 | 13/16 | 20.64 | 112.27 |
| DKFR12-9 | 9/16 | 3/4 | 19.05 | 1 | 25.4 | 1-1/16 | 26.98 | 122.43 |

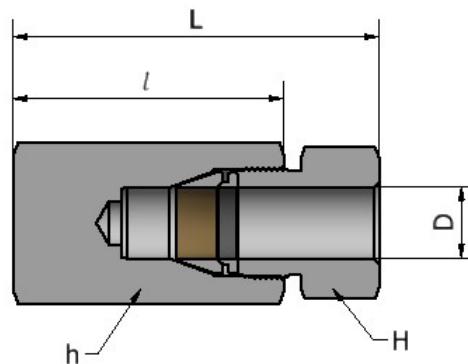
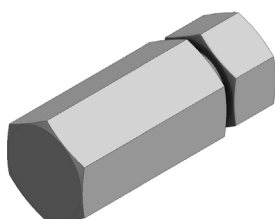
Plug
DKFP



Fractional

| Part No. | Tube O.D D | | Width across flat H | | L |
|----------|---------------|-------|------------------------|-------|-------|
| | In. | mm | In. | mm | |
| DKFP-4 | 1/4 | 6.35 | 9/16 | 14.28 | 35.81 |
| DKFP-6 | 3/8 | 9.52 | 11/16 | 17.46 | 41.91 |
| DKFP-8 | 1/2 | 12.7 | 15/16 | 23.81 | 49.28 |
| DKFP-9 | 9/16 | 14.29 | 1 | 25.4 | 50.8 |
| DKFP-12 | 3/4 | 19.05 | 1-1/4 | 31.75 | 75.18 |

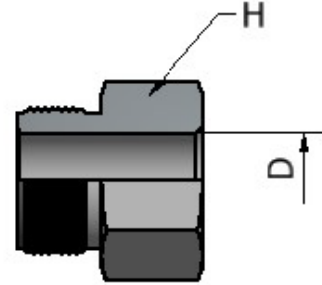
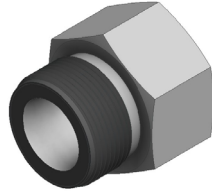
Cap
DKFC



Fractional

| Part No. | Tube O.D D | | Width across flat | | | | l | L |
|----------|---------------|-------|-------------------|-------|--------|-------|-------|-------|
| | In. | mm | H | | h | | | |
| | In. | mm | In. | mm | In. | mm | | |
| DKFC-4 | 1/4 | 6.35 | 9/16 | 14.28 | 5/8 | 15.87 | 30.23 | 42.93 |
| DKFC-6 | 3/8 | 9.53 | 11/16 | 17.46 | 3/4 | 19.05 | 37.85 | 53.85 |
| DKFC-8 | 1/2 | 12.7 | 15/16 | 23.81 | 1 | 25.4 | 49.02 | 66.55 |
| DKFC-9 | 9/16 | 14.29 | 1 | 25.4 | 1-1/16 | 26.98 | 50.8 | 69.85 |
| DKFC-12 | 3/4 | 19.05 | 1-1/4 | 31.75 | 1-3/8 | 34.92 | 67.06 | 89.66 |

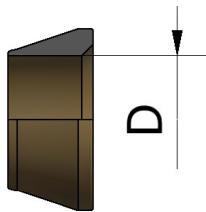
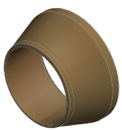
Nut
DKFN



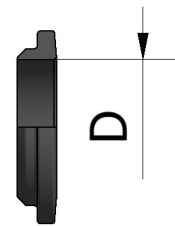
Fractional

| Part No. | Tube O.D D | | Width across flat H | |
|----------|---------------|-------|------------------------|-------|
| | In. | mm | In. | mm |
| | DKFN-4 | 1/4 | 6.35 | 9/16 |
| DKFN-6 | 3/8 | 9.53 | 11/16 | 17.46 |
| DKFN-8 | 1/2 | 12.7 | 15/16 | 23.81 |
| DKFN-9 | 9/16 | 14.29 | 1 | 25.4 |
| DKFN-12 | 3/4 | 19.05 | 1-1/4 | 31.75 |

Front Ferrule
DKFF



Back Ferrule
DKFB



Fractional

| Part No. | Tube O.D D | |
|----------|---------------|-------|
| | In. | mm |
| DKFF-4 | 1/4 | 6.35 |
| DKFF-6 | 3/8 | 9.53 |
| DKFF-8 | 1/2 | 12.7 |
| DKFF-9 | 9/16 | 14.29 |
| DKFF-12 | 3/4 | 19.05 |

Fractional

| Part No. | Tube O.D D | |
|----------|---------------|-------|
| | In. | mm |
| DKFB-4 | 1/4 | 6.35 |
| DKFB-6 | 3/8 | 9.53 |
| DKFB-8 | 1/2 | 12.7 |
| DKFB-9 | 9/16 | 14.29 |
| DKFB-12 | 3/4 | 19.05 |

The information shown in this catalog are not for design purpose, but for reference only.
The accuracy of information is not the liability of our company.

Safe Component Selection

The Selection of component for any applications or system design must be considered to ensure safe performance. Component function, material compatibility, component ratings, proper installation, operation and maintenance remain the sole responsibility of the system designer and the user. DK-Lok accepts no liability for any improper selection, installation, operation or maintenance.